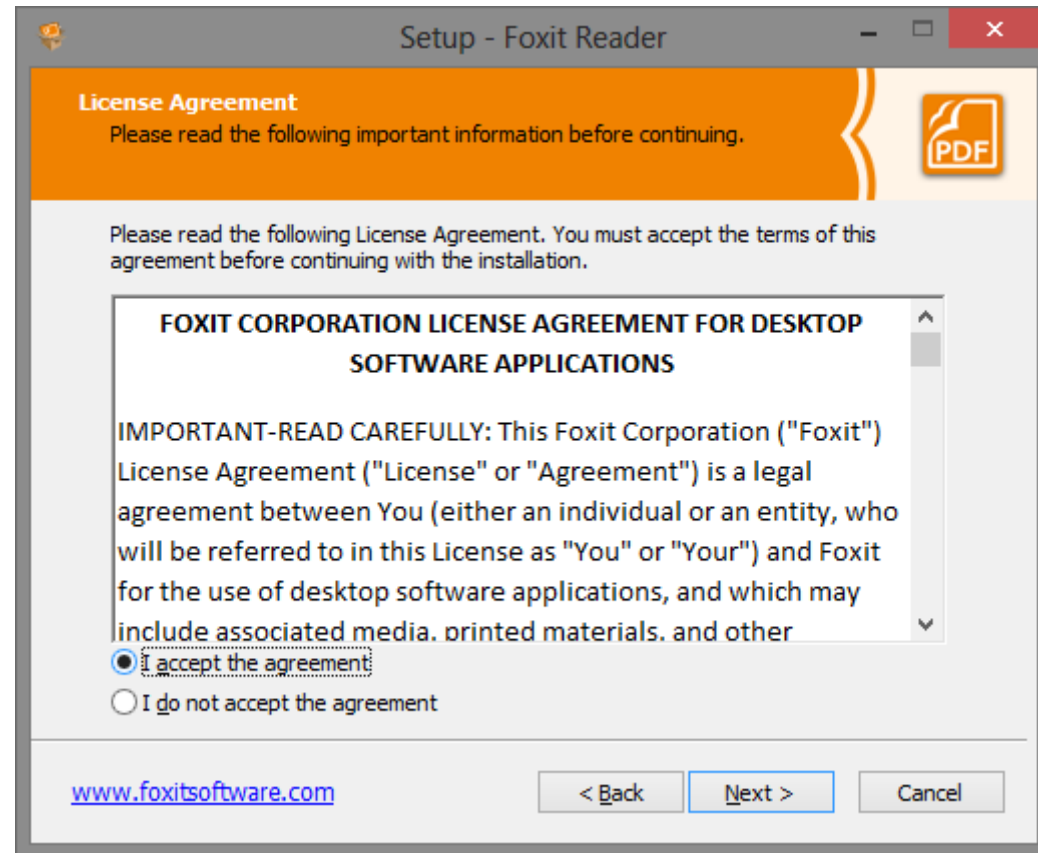


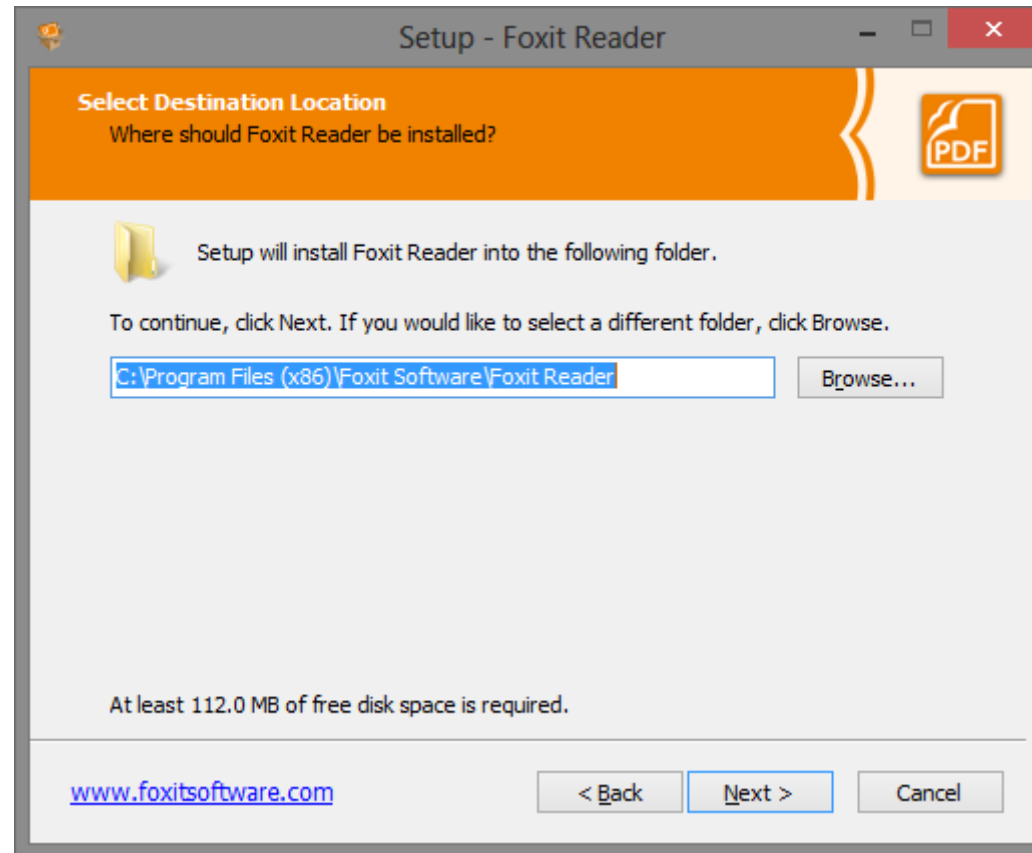
Pornirea aplicației de instalare, Next



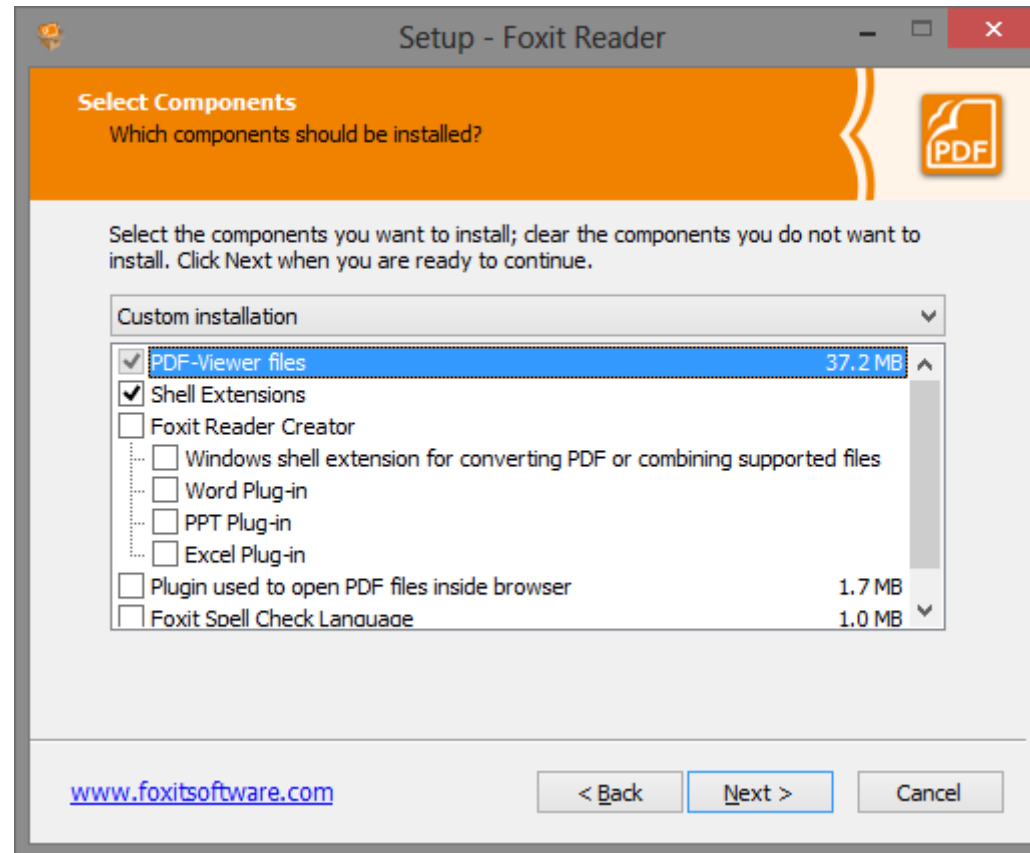
Selectați “I accept”, Next



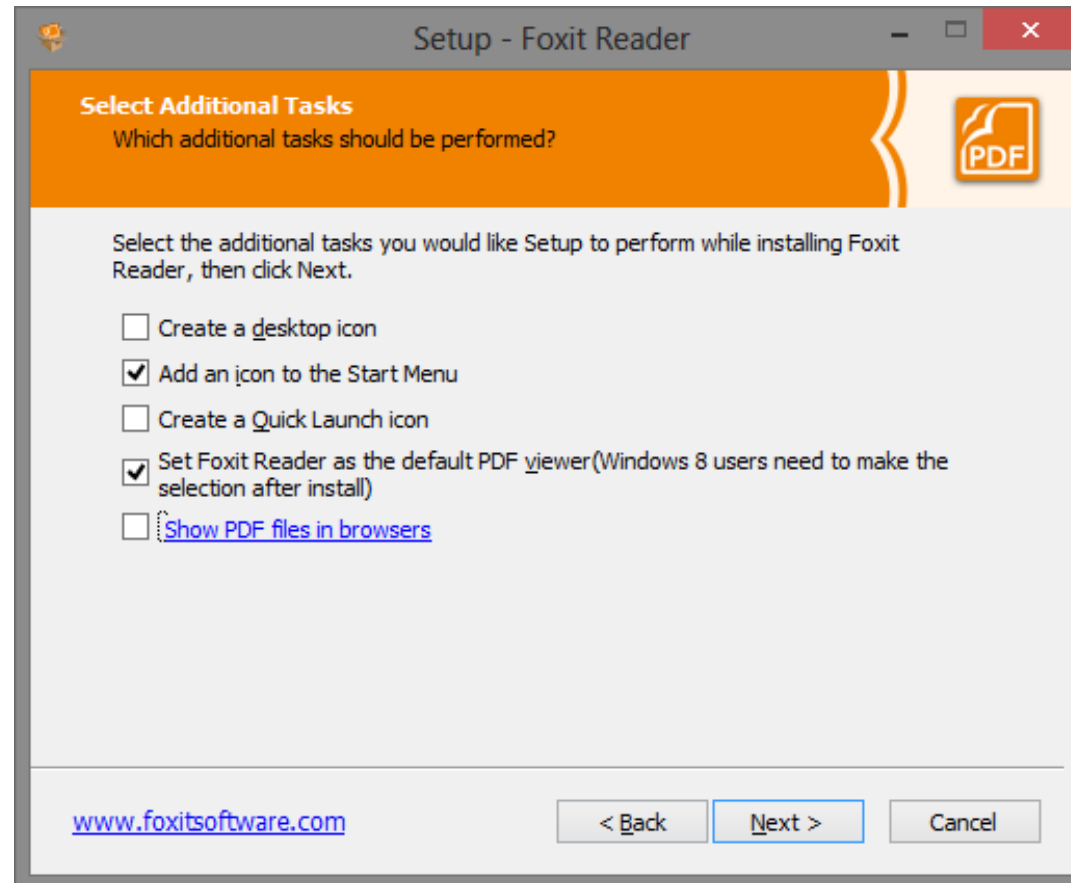
Aici de obicei nu trebuie modificat nimic, Next



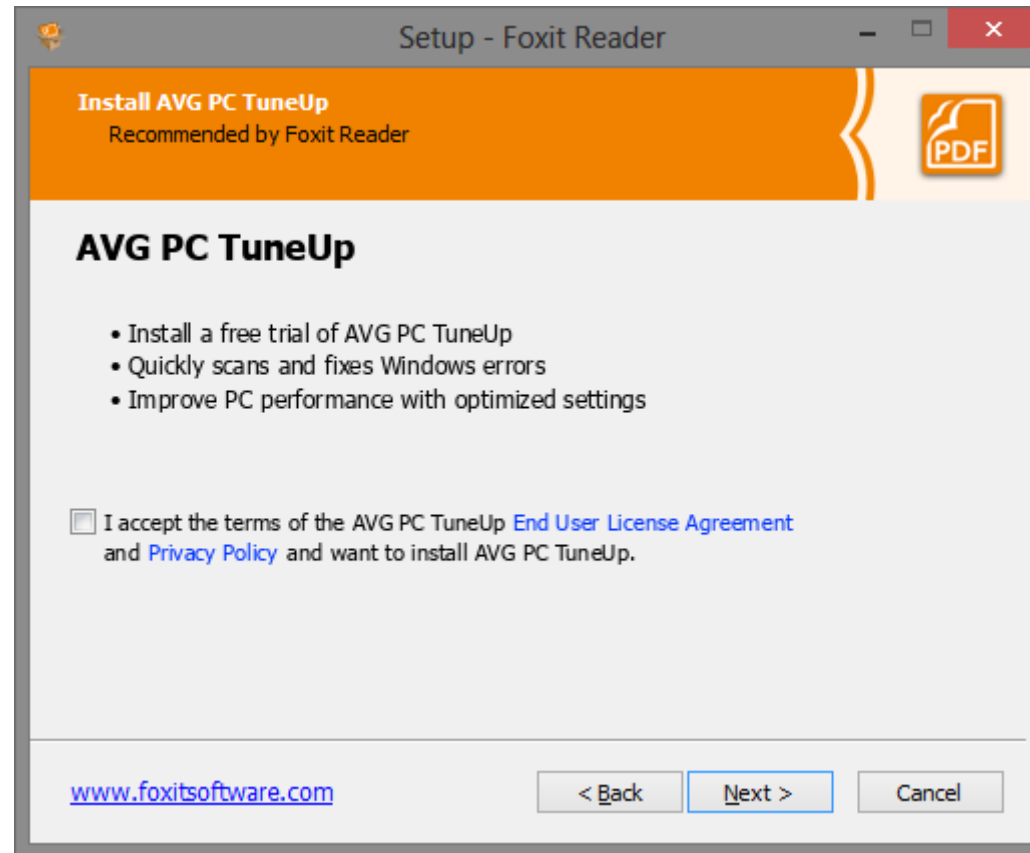
Lăsați selectat doar “Shell Extensions” restul
deselectați, Next



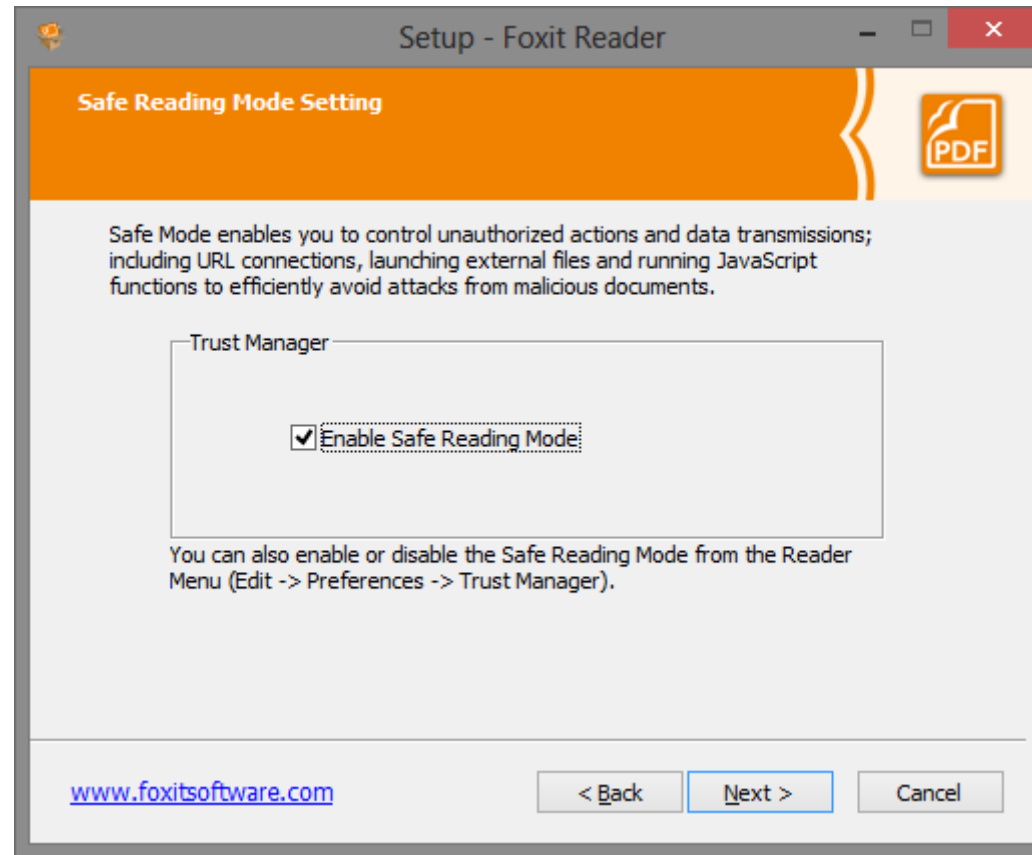
Deselectați ultima opțiune, Next



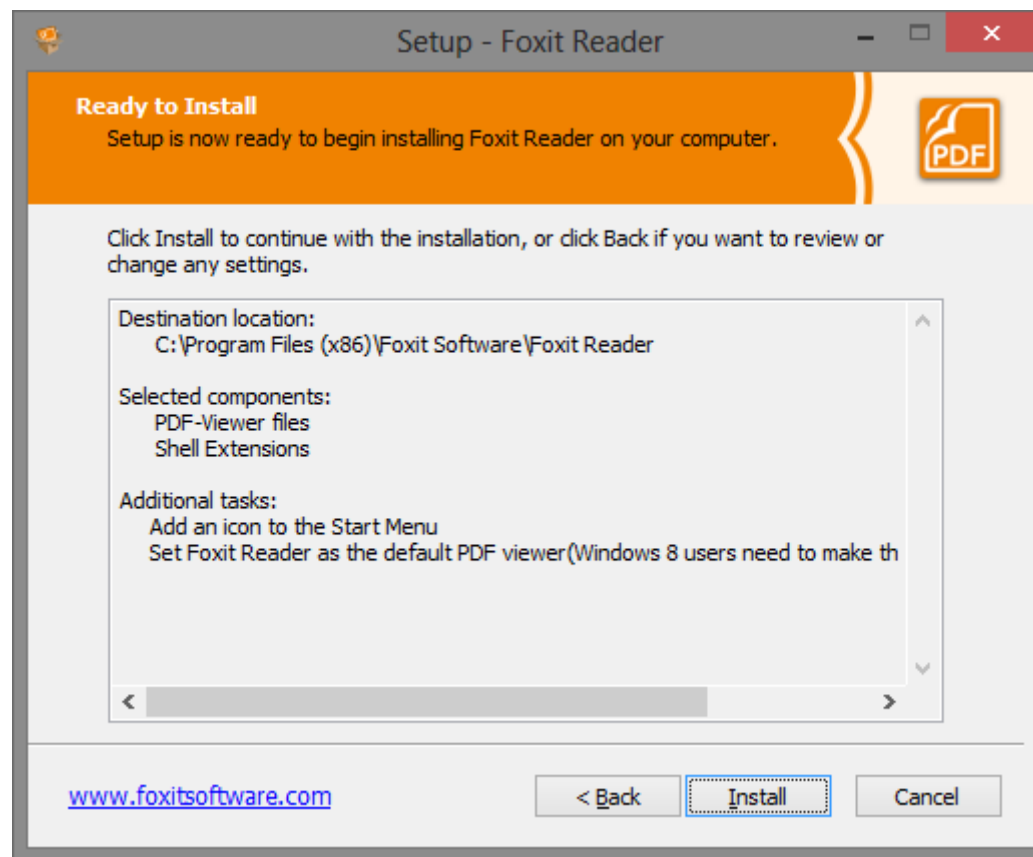
Important: Deselectați “I accept”, altfel vă instalează aplicații nedorite, Next



Aici nu trebuie modificat nimic, Next



Re-verificați opțiunile și apăsați Install



Aplicația este instalată

